

LECTRIC II

Flush Ceiling Mount Screen with Service & Trap Door



The **Lectric II** is an extruded aluminum ceiling flush mount motorized screen; suitable for air handling spaces and designed for use with all self-supported screen surfaces. This design accommodates additional leader lengths and includes a built-in ceiling sliding bracket system.

The **Lectric II** is the ideal choice for installation up to 180" (4:3) diagonal. **Lectric II** also includes a pre-construction option that allows the housing to be installed independently prior to the fabric and motor assembly. This provides for safety and ease of installation for new construction or renovation applications.

FEATURES

- Extruded plenum rated aluminum housing with white or black powder coated finish
- Pre-construction housing available
- Rigid large diameter ribbed aluminum roller featuring Vutec's FRS™ (Fabric Relief Step)
- Standard 12" black leader (custom lengths available)
- Interfaces with low voltage relays, IR, RF and RS-232 remote controls
- Service door and trap doors are standard
- Custom sizes and formats available
- Available in 16:10 and 2.40:1 formats

Optional 110V Silent Motor

- Limited sizes
- Service door only

SURFACES

- Matte White
- Vu-Flex Pro
- Twin-Vu
- SoundScreen
- GreyDove SoundScreen

TECHNICAL

Diagonal	Viewing Area (nominal)	Housing Width	Shipping (nominal)
----------	------------------------	---------------	--------------------

1:1 A/V Format

n/a	50" x 50"	63.5"	90 lbs.
n/a	60" x 60"	73.5"	100 lbs.
n/a	70" x 70"	83.5"	110 lbs.
n/a	84" x 84"	97.5"	125 lbs.
n/a	96" x 96"	109.5"	168 lbs. (s)

4:3 Video Format

72"	43.25" x 57.5"	73"	85 lbs.
78"	46.75" x 62.25"	77.75"	90 lbs.
84"	50.5" x 67.25"	82.75"	92 lbs.
100"	60" x 80"	95.5"	105 lbs.
120"	72" x 96"	111.5"	168 lbs. (s)

144"	86.25" x 115.25"	130.75"	175 lbs. (s)
150"	90" x 120"	135.5"	180 lbs. (s)
(1) 160"	96" x 128"	143.5"	185 lbs. (s)
(1) 180"	108" x 144"	159.5"	200 lbs. (s)

16:9 HDTV Format

92"	45" x 80"	95.5"	105 lbs.
103"	50.5" x 89.75"	105.25"	115 lbs.
110"	54" x 96"	111.5"	168 lbs. (s)
123"	60" x 107"	122.5"	175 lbs. (s)
133"	65" x 116"	131.5"	180 lbs. (s)
147"	72" x 128"	143.5"	185 lbs. (s)

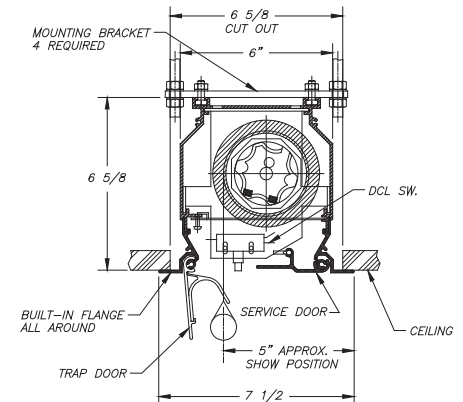
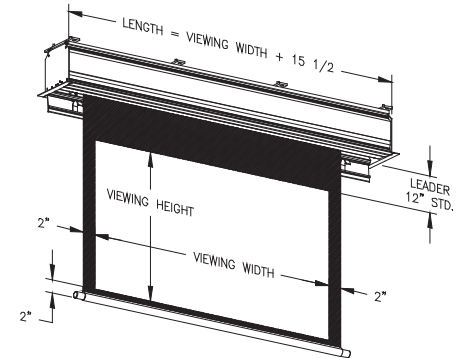
2.35:1 Widescreen Format

115"	45" x 106"	121.5"	175 lbs. (s)
129"	50.5" x 118.75"	134.25"	180 lbs. (s)
138"	54" x 127"	142.5"	185 lbs. (s)
(1) 153"	60" x 141"	156.5"	200 lbs. (s)

(1) Not available with 110V Silent Motor.

Custom sizes and additional leader or perforated leader are available. A/V format screens includes 1" black side borders and leader. A/V housing size is viewing area width plus 13.5".

(s) item is shipped on a skid.



The Projection Screen Technology Leader



P. 800.770.4700 / 954.545.9000
F. 800.548.5885 / 954.545.9011
www.vutec.com

LECTRIC III

Motorized Tab-Tensioned Screen for Wall or Ceiling

The **Lectric III** is Vutec's standard tab-tensioned, motorized screen. Like all Vutec electric screens, the Lectric III is designed with an all aluminum housing and is engineered for flexible installation with Vutec's EMS™ EZ-Mounting System.

FEATURES

- Surface mount for wall or ceiling
- Vutec EMS™ (EZ-Mounting System)
- Aluminum housing with choice of black or white finishes
- Rigid ribbed aluminum roller featuring Vutec's FRS™ (Fabric Relief Step)
- Standard 12" black leader
- Interfaces with low voltage relays, IR, RF and RS-232
- Requires hard wired installation
- Custom sizes and formats available
- Available in 16:10 and 2.40:1 formats
- In-ceiling trim kit available up to 144" wide

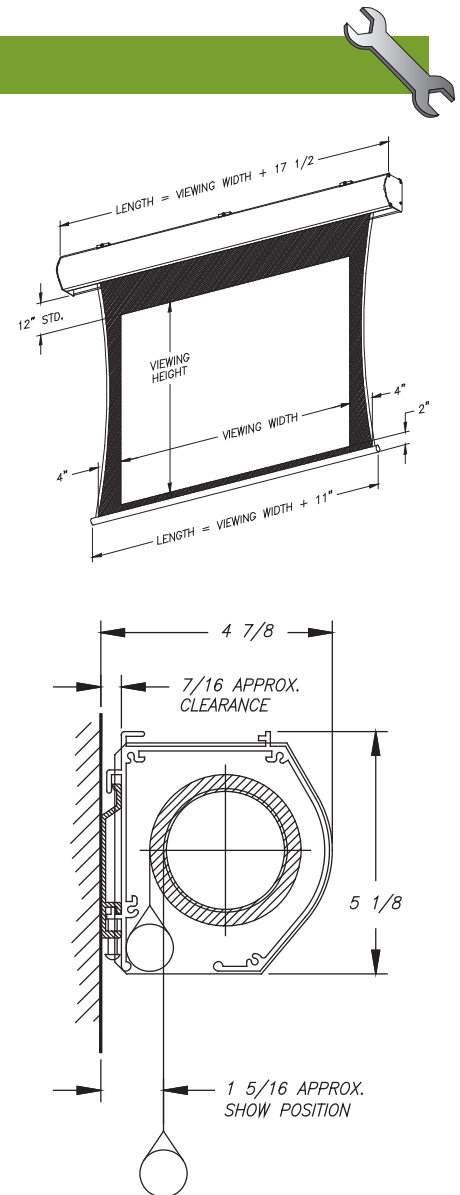
SURFACES

- BriteWhite
- PearlBrite
- Rear-Vu
- BriteWhite Opaque
- GreyDove

TECHNICAL

Diagonal	Viewing Area (nominal)	Housing Width	Shipping (nominal)
1:1 A/V Format			
n/a	50" x 50"	67.5"	38 lbs.
n/a	60" x 60"	77.5"	40 lbs.
n/a	70" x 70"	87.5"	45 lbs.
n/a	84" x 84"	101.5"	50 lbs.
n/a	96" x 96"	113.5"	110 lbs. (s)
4:3 Video Format			
72"	43.25" x 57.5"	75"	43 lbs.
78"	46.75" x 62.25"	79.75"	46 lbs.
84"	50.5" x 67.25"	84.75"	49 lbs.
100"	60" x 80"	97.5"	54 lbs.
120"	72" x 96"	113.5"	120 lbs. (s)
144"	86.25" x 115.25"	132.75"	128 lbs. (s)
150"	90" x 120"	137.5"	140 lbs. (s)
160"	96" x 128"	145.5"	155 lbs. (s)
180"	108" x 144"	161.5"	170 lbs. (s)
16:9 HDTV Format			
92"	45" x 80"	97.5"	52 lbs.
103"	50.5" x 89.75"	107.25"	55 lbs.
110"	54" x 96"	113.5"	120 lbs. (s)
123"	60" x 107"	124.5"	130 lbs. (s)
133"	65" x 116"	133.5"	140 lbs. (s)
147"	72" x 128"	145.5"	155 lbs. (s)
2.35:1 Widescreen Format			
115"	45" x 106"	123.5"	130 lbs. (s)
129"	50.5" x 118.75"	136.25"	132 lbs. (s)
138"	54" x 127"	144.5"	155 lbs. (s)
153"	60" x 141"	158.5"	160 lbs. (s)

Custom sizes and additional leader are available.
(s) item is shipped on a skid



The Projection Screen Technology Leader



P. 800.770.4700 / 954.545.9000
F. 800.548.5885 / 954.545.9011
www.vutec.com

LECTRIC IV

Flush Ceiling Mount Screen with Service & Trap Door



The **Lectric IV** is a ceiling flush mount motorized screen; suitable for air handling spaces and designed for use with flexible tab-tensioned fabrics. Its design accommodates additional leader lengths and includes a built-in trim kit and an internal sliding bracket mounting system.

The **Lectric IV** is the ideal choice for installation up to 180" diagonal. **Lectric IV** also includes a pre-construction option that allows the housing to be installed prior to the fabric and motor assembly. This provides for safety and security for new construction or renovation applications.

FEATURES

- Extruded plenum rated aluminum housing with white or black powder coated finish
- Pre-construction housing available
- Large diameter rigid ribbed aluminum roller featuring Vutec's FRS™ (Fabric Relief Step)
- Standard 12" black leader (custom lengths available)
- Interfaces with low voltage relays, IR, RF and RS-232 remote controls
- Service door and trap door standard
- Custom sizes available
- Available in 16:10 and 2.40:1 formats

TECHNICAL

4:3 Video Format

Diagonal	Viewing Area (nominal)	Housing Width	Shipping (nominal)
72"	43.25" x 57.5"	80"	132 lbs.
78"	46.75" x 62.25"	84.75"	142 lbs.
84"	50.5" x 67.25"	89.75"	149 lbs.
100"	60" x 80"	102.5"	165 lbs.
120"	72" x 96"	118.5"	215 lbs. (s)
144"	86.25" x 115.25"	137.75"	230 lbs. (s)
150"	90" x 120"	142.5"	250 lbs. (s)
160"	96" x 128"	150.5"	255 lbs. (s)
180"	108" x 144"	166.5"	270 lbs. (s)

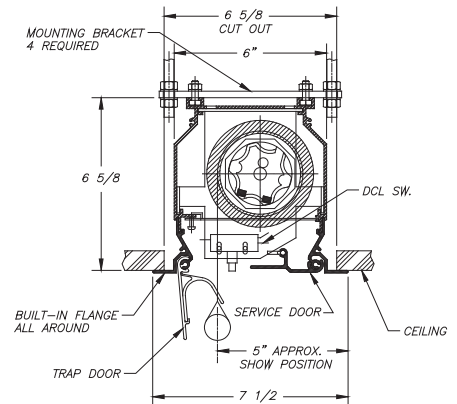
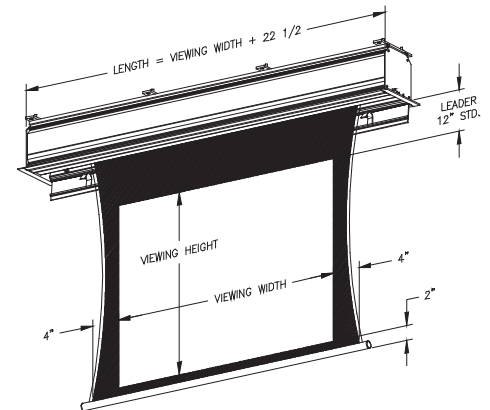
16:9 HDTV Format

92"	45" x 80"	102.5"	115 lbs.
103"	50.5" x 89.75"	112.25"	135 lbs. (s)
110"	54" x 96"	118.5"	140 lbs. (s)
123"	60" x 107"	129.5"	155 lbs. (s)
133"	65" x 116"	138.5"	170 lbs. (s)
147"	72" x 128"	150.5"	190 lbs. (s)

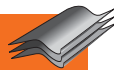
2.35:1 Widescreen Format

115"	45" x 106"	128.5"	155 lbs. (s)
129"	50.5" x 118.75"	141.25"	250 lbs. (s)
138"	54" x 127"	149.5"	255 lbs. (s)
153"	60" x 141"	163.5"	270 lbs. (s)

Custom sizes and additional leader are available.
(s) item is shipped on a skid.



SURFACES



- BriteWhite
- PearlBrite
- Rear-Vu
- BriteWhite Opaque
- GreyDove



The Projection Screen Technology Leader



P. 800.770.4700 / 954.545.9000
F. 800.548.5885 / 954.545.9011
www.vutec.com



The Award-Winning High-Definition Wall Screen

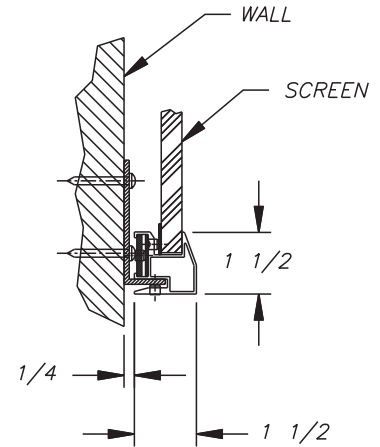
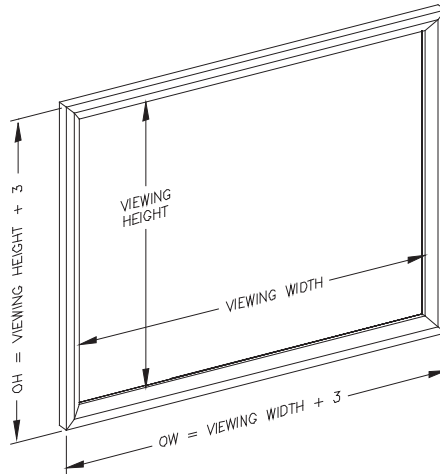
SilverStar™ is Vutec's patented* award-winning front projection screen with a gain of 6.0. This screen delivers the ultimate in picture quality, providing high brightness, vivid colors, high contrast and a 180 degree viewing area, putting it in a class by itself as a revolutionary high-definition screen.

SilverStar's superior performance begins with its innovative, patented technology—a silver-based material combined with multiple optical layers to provide the 6.0 gain. This state-of-the-art technology increases color saturation while expanding contrast in controlled or uncontrolled lighting environments.

SilverStar is custom made to order and can be multiplexed for large theaters. With unsurpassed versatility, it is the screen of choice for home theater systems, retail displays, command and control (NOC), worship and educational venues.



TECHNICAL



FEATURES

- High-Definition
- High Gain (6.0)
- High Contrast
- Light control is not critical
- Wide viewing area
- Outstanding color reproduction
- Extruded 1 1/2" black velvet finished frame
- Panels can be multiplexed for large presentations
- Screen is fully assembled and shipped in wood crate
- Custom sizes and formats available
- Available in 16:10 and 2.40:1 formats
- Optional tubular stand legs

Diagonal	Viewing Area (nominal)	O.D.	Shipping (nominal)
1:1 A/V Format			
n/a	30" x 30"	33" x 33"	57 lbs.
n/a	40" x 40"	43" x 43"	76 lbs.
n/a	48" x 48"	51" x 51"	97 lbs.
n/a	59" x 59"	62" x 62"	117 lbs.
4:3 Video Format			
72"	43.25" x 57.5"	46.25" x 60.5"	103 lbs.
78"	46.75" x 62.25"	49.75" x 65.25"	110 lbs.
84"	50.5" x 67.25"	53.5" x 70.25"	120 lbs.
100"	59" x 78.5"	62" x 81.5"	148 lbs.
16:9 HDTV Format			
92"	45" x 80"	48" x 83"	122 lbs.
103"	50.5" x 89.75"	53.5" x 92.75"	151 lbs.
110"	54" x 96"	57" x 99"	165 lbs.
123"	59" x 105"	62" x 108"	186 lbs.
2.35:1 Widescreen Format			
115"	45" x 106"	48" x 109"	180 lbs.
129"	50.5" x 118.75"	53.5" x 121.75"	210 lbs.
138"	54" x 127"	57" x 130"	240 lbs.
153"	59" x 138.5"	62" x 141.5"	260 lbs.

Custom sizes are available.
* U.S. Patent No. 7,057,812



The Projection Screen Technology Leader



P. 800.770.4700 / 954.545.9000
F. 800.548.5885 / 954.545.9011
www.vutec.com

VU-EASY

Fixed Frame Wall Screen

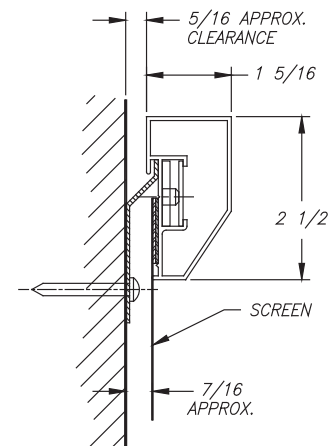
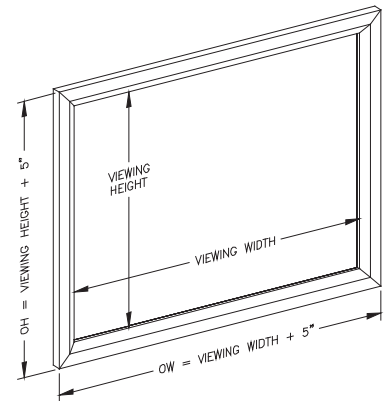
Vu-Easy is Vutec's most popular, high quality fixed frame wall screen. It's permanently-tensioned, easy-to-install and is available in a choice of seven screen surfaces to suit any viewing environment. **Vu-Easy's** standard features include a black velvet beveled frame, the VTS™ system for easy installation and is available in 16:9, 2.35:1 and 4:3 formats to complement any size viewing room.

Vu-Easy is also available in Vutec's award-winning acoustically transparent SoundScreen, allowing for speaker placement behind the screen for an optimal sound experience.



TECHNICAL

Diagonal	Viewing Area (nominal)	O.D.	Shipping (nominal)
4:3 Video Format			
72"	43.25" x 57.5"	48.25" x 62.5"	25 lbs.
78"	46.75" x 62.25"	51.75" x 67.25"	26 lbs.
84"	50.5" x 67.25"	55.5" x 72.25"	28 lbs.
100"	60" x 80"	65" x 85"	30 lbs.
120"	72" x 96"	77" x 101"	33 lbs.
144"	86.25" x 115.25"	91.25" x 120.25"	90 lbs. (s)
160"	96" x 128"	101" x 133"	95 lbs. (s)
⁽¹⁾ 180"	108" x 144"	113" x 149"	100 lbs. (s)
16:9 HDTV Format			
92"	45" x 80"	50" x 85"	29 lbs.
103"	50.5" x 89.75"	55.5" x 94.75"	31 lbs.
110"	54" x 96"	59" x 101"	33 lbs.
123"	60" x 107"	65" x 112"	34 lbs.
133"	65" x 116"	70" x 121"	110 lbs. (s)
147"	72" x 128"	77" x 133"	125 lbs. (s)
159"	78" x 138.5"	83" x 143.5"	136 lbs. (s)
2.35:1 Widescreen Format			
115"	45" x 106"	50" x 111"	33 lbs.
129"	50.5" x 118.75"	55.5" x 123.75"	88 lbs. (s)
138"	54" x 127"	59" x 132"	95 lbs. (s)
153"	60" x 141"	65" x 146"	100 lbs. (s)
153"	74" x 174"	79" x 179"	125 lbs. (s)



FEATURES

- Easy to assemble frame
- Extruded 2 1/2" black velvet finished frame
- Standard VTS™ (Vutec Tensioning System)
- Installer friendly
- Custom sizes and formats available
- Available in 16:10 and 2.40:1 formats
- Optional black liner for SoundScreen
- Optional tubular stand legs

SURFACES

- Matte White
- BriteWhite Opaque
- PearlBrite
- Rear-Vu
- GreyDove
- SoundScreen
- GreyDove SoundScreen

⁽¹⁾ Not available in GreyDove SoundScreen.
Custom sizes are available.
(s) item is shipped on a skid



The Projection Screen Technology Leader



P. 800.770.4700 / 954.545.9000
F. 800.548.5885 / 954.545.9011
www.vutec.com