

Lowell™

behind-the-scenes
audio visual

Systems Integration 2010



electronic enclosures
& power distribution
products
for professional AV systems

The Lowell Advantage

Since 1947, Lowell Manufacturing has been developing quality products for the professional audio-visual community. Valued for innovative design, superior materials and exceptional performance, Lowell products are preferred by many industry consultants and systems integrators who have come to appreciate the advantage of specifying Lowell quality.

From boardrooms and professional multimedia areas to home theaters, Lowell products work behind the scenes to provide the seamless systems integration that's needed for quality performance. A full line of electronic equipment racks and AC power distribution products supports the specific application requirements of a multitude of venues including sports facilities, arenas, stadiums, convention centers, houses of worship, cinemas, home theaters, restaurants, retail outlets, commercial buildings, and educational facilities.

Whether the priority is to keep systems components secure or to streamline accessibility, Lowell has the product specifically designed for the task. Visit www.lowellmfg.com to view the complete line of rack, power, and audio products.



Note on model numbers: As we continually strive to provide superior service to all our customers, we have redefined rack model numbers in a new system that uses more descriptive acronyms and product dimensions to simplify product identification.

Behind the Scenes



LPTR-series — Lowell Pull & Turn Rack

The LPTR-series is designed for built-in use, to recess electronic equipment in cabinets or closets until service access is needed. The rack slides forward and pivots on a turntable base for easy access. Automatic "lock-out" protection prevents accidental closure. Models are available with two or four sides to accommodate heavy loads (150-300 lbs.).

- Turntable has push-button lock / release for 60° and 90° access to connections.
- Front security panels covers push-button lock to avoid unauthorized access.
- Automatic "lock-out" protection.
- Rack engages from turntable for wiring or maintenance.
- Two or four sides to accommodate heavy loads.



The LPTR-series is designed for built-in use, to recess electronic equipment until service access is needed



Model No.	formerly	Panel Space rack units	Depth (overall) inches (cm)	Height (overall) inches (cm)	Width (overall) inches (cm)	Load Rating lbs. (kg)
LPTR2 1019	LPT2 1917	10RU	19 (48)	20 08 (51)	19 13 (49)	150 (68)
LPTR4 1019	LPT4 1917	10RU	19 (48)	20 08 (51)	19 13 (49)	300 (136)
LPTR4 1023	LPT4 2317	10RU	23 (58)	20 08 (51)	19 13 (49)	300 (136)
LPTR2 1219	LPT2 1921	12RU	19 (48)	23 58 (60)	19 13 (49)	150 (68)
LPTR4 1219	LPT4 1921	12RU	19 (48)	23 58 (60)	19 13 (49)	300 (136)
LPTR4 1223	LPT4 2321	12RU	23 (58)	23 58 (60)	19 13 (49)	300 (136)
LPTR2 1619	LPT2 1928	16RU	19 (48)	30 58 (78)	19 13 (49)	150 (68)
LPTR4 1619	LPT4 1928	16RU	19 (48)	30 58 (78)	19 13 (49)	300 (136)
LPTR4 1623	LPT4 2328	16RU	23 (58)	30 58 (78)	19 13 (49)	300 (136)
LPTR2 2119	LPT2 1936	21RU	19 (48)	39 33 (100)	19 13 (49)	150 (68)
LPTR4 2119	LPT4 1936	21RU	19 (48)	39 33 (100)	19 13 (49)	300 (136)
LPTR4 2123	LPT4 2336	21RU	23 (58)	39 33 (100)	19 13 (49)	300 (136)

One rack unit equals 1.75-inches. Product dimensions have been rounded; see specification sheets for more detailed information (www.lowellmfg.com).

LVR-series — Lowell Vari-Rack™

The variable depth, thin frame (19.21 inch width) rack can be adjusted in the field to accommodate multiple height/depth requirements. Depth is selected during set-up (14-21 inches or 21-28 inches, depending on model selected). Post-style rails can be field-cut to a custom height using printed (1RU) cut-marks for guides. When fully expanded, exposed area in base/top will accept (optional) fan or closure panels.

- 400 lbs. load capacity
- Shipped unassembled and packaged in two cartons.
- Options include vented side panels, rear access cover, and middle depth rails.

Model No.	Panel Space rack units	Depth inches (cm)	Height (overall) inches (cm)	Width (overall) inches (cm)
LVR 44 1421	44RU	14 21 (36 53)	80 84 (205)	19 21 (49)
LVR 44 2128	44RU	21 28 (53 71)	80 84 (205)	19 21 (49)
LVR 38 1421	38RU	14 21 (36 53)	70 34 (179)	19 21 (49)
LVR 38 2128	38RU	21 28 (53 71)	70 34 (179)	19 21 (49)
LVR 30 1421	30RU	14 21 (36 53)	56 34 (143)	19 21 (49)
LVR 30 2128	30RU	21 28 (53 71)	56 34 (143)	19 21 (49)
LVR 22 1421	22RU	14 21 (36 53)	42 34 (108)	19 21 (49)
LVR 22 2128	22RU	21 28 (53 71)	42 34 (108)	19 21 (49)
LVR 14 1421	14RU	14 21 (36 53)	28 34 (72)	19 21 (49)
LVR 14 2128	14RU	21 28 (53 71)	28 34 (72)	19 21 (49)
LVR 8 1421	8RU	14 21 (36 53)	17 84 (45)	19 21 (49)
LVR 8 2128	8RU	21 28 (53 71)	17 84 (45)	19 21 (49)

One rack unit equals 1.75-inches. Product dimensions have been rounded; see specification sheets for more detailed information (www.lowellmfg.com).

LCR-1216 — Lowell Credenza Rack

The welded LCR-series is a rugged, low-height rack that ships fully assembled and ready to install in cabinets or under counters. Top and bottom sections are made with 14-gauge steel. Front and rear rack rails are made with 11-gauge steel and threaded (10-32).

Model No.	formerly	Panel Space rack units	Depth (overall) inches (cm)	Height (overall) inches (cm)	Width (overall) inches (cm)
LCR 1216	LCR 21	12RU	16 (41)	23 (58)	19 25 (49)

LPSR-F1226 — Lowell Portable Sloped-front Rack

This rack fits under work surfaces to provide convenient, rollout access to electronics. The 15° sloped-front is designed for users to be able to view contents from a seated position. The stow-away front door slides into the base area for storage, while the short rear door allows 1RU wire access. Metal top included; optional graphite top also available.

- 12RU fixed mounting rails on sloped front.

Model No.	formerly	Panel Space rack units	Depth (overall) inches (cm)	Height (overall) inches (cm)	Width (overall) inches (cm)
LPSR F1226	L45 21	12RU	26 (66)	26 88 (68)	22 19 (56)

One rack unit equals 1.75-inches. Product dimensions have been rounded; see specification sheets for more detailed information (www.lowellmfg.com).

LLR-series — Lowell Laminated Rack

The LLR-series features cams and dowels that install from the inside; black cover caps provide a finished (no visible hardware) appearance.

- Made with 5/8-inch wood composite, black woodgrain laminate.
- Ships flat with pre-mounted front rails and Phillips-head cams, dowels and caps.
- 11-gauge front rack rail is threaded 10-32 (printed RU measurements).

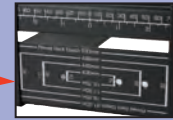
Model No.	formerly	Panel Space rack units	Depth (overall) inches (cm)	Height (overall) inches (cm)	Width (overall) inches (cm)
LLR 2118 B	LR 2118 B	21RU	18 (46)	38 15 (97)	20 41 (52)
LLR 1618 B	LR 1618 B	16RU	18 (46)	29 40 (75)	20 41 (52)
LLR 1218 B	LR 1218 B	12RU	18 (46)	22 40 (57)	20 41 (52)
LLR 1018 B	LR 1018 B	10RU	18 (46)	18 90 (48)	20 41 (52)

One rack unit equals 1.75-inches. Product dimensions have been rounded; see specification sheets for more detailed information (www.lowellmfg.com).

Specialty Racks

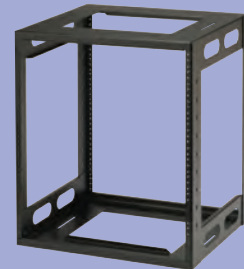


Vari-Rack depth is selected during set-up for a customized fit



The printed scale on top/bottom sections facilitates set-up

Vari-Rack options include vented side panels, front doors, mobile base, middle-depth rails, and a rear access cover with keylock



Sturdy and efficient, the welded LCR-series features 14-gauge U S steel on top and bottom sections, and 11-gauge front/rear rack rails



The LPSR-F1226 has a sloped front for easy visibility from a seated position. This rack is ideal for use under desks or counters. Twin-wheel casters roll over carpets easily.

Visit www.lowellmfg.com for the complete line of rack products and accessories including multiple options for desktop and cabinet use



Black woodgrain laminate racks are shipped flat. Front rails are pre-mounted and feature threaded 10-32 holes.

Freestanding Racks



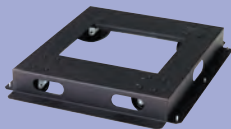
LER-series shown with optional front door: solid, fully vented or Plexiglas



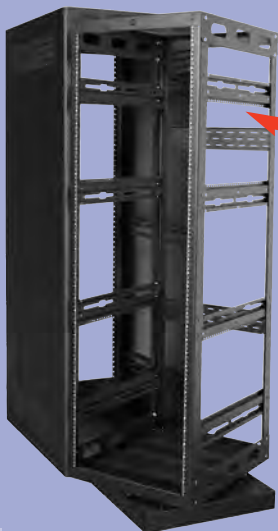
Ganging racks include multiple looming options for wire and cable management

Options include front doors, side panels, and a variety of accessories

Special seismic-rated racks are also available



Stationary and mobile bases are available for many rack models



Interior rack pulls out and rotates (left and right)

750 lbs load capacity

Side and rear braces feature mounting and looming holes

Platform with interior rack disengages from exterior unit for easy shop wiring

LER-series — Lowell Enclosed Racks

Lowell enclosed racks are suitable for large home theaters, meeting rooms, boardrooms, and similar areas with centralized electronic distribution systems. The LER-series features fully-welded construction for solid performance, vented side panels, top closure panels, flush rear doors, knockout panels (above and below rear door), and adjustable mounting rails. Front doors and a variety of accessories are also available. Visit www.lowellmfg.com to view the complete line of products including economical, fixed-rail racks (LER-F-series) and code-compliant, seismic-rated enclosed racks (LSER-series).

Model No.	formerly	Panel Space rack units	Depth (overall) inches (cm)	Height (overall) inches (cm)	Width (overall) inches (cm)
LER 4422	L265-77	44RU	22 (56)	83 13 (211)	23 06 (59)
LER 4427	L267-77	44RU	27 (69)	83 13 (211)	23 06 (59)
LER 4432	L268-77	44RU	32 (81)	83 13 (211)	23 06 (59)
LER 4022	L265-70	40RU	22 (56)	76 13 (193)	23 06 (59)
LER 4027	L267-70	40RU	27 (69)	76 13 (193)	23 06 (59)
LER 4032	L268-70	40RU	32 (81)	76 13 (193)	23 06 (59)
LER 3522	L265-61	35RU	22 (56)	67 38 (171)	23 06 (59)
LER 3527	L267-61	35RU	27 (69)	67 38 (171)	23 06 (59)
LER 3532	L268-61	35RU	32 (81)	67 38 (171)	23 06 (59)
LER 2422	L265-42	24RU	22 (56)	48 13 (122)	23 06 (59)
LER 2427	L267-42	24RU	27 (69)	48 13 (122)	23 06 (59)
LER 2432	L268-42	24RU	32 (81)	48 13 (122)	23 06 (59)
LER 2122	L265-36	21RU	22 (56)	42 88 (109)	23 06 (59)
LER 2127	L267-36	21RU	27 (69)	42 88 (109)	23 06 (59)

LGR-series — Lowell Ganging Racks

The LGR-series of ganging racks includes an open frame rack, vented rear door, adjustable mounting rails, top closure panels, removable knockout panels (above and below rear door), and panel hardware. Optional front door, platform base, fan panels, and other accessories are also available. Visit www.lowellmfg.com to view the complete line of racks, options and accessories including code-compliant, seismic-rated ganging racks (LSGR-series).

Model No.	formerly	Panel Space rack units	Depth (overall) inches (cm)	Height (overall) inches (cm)	Width (overall) inches (cm)
LGR 4422	L275-77	44RU	22 (56)	83 13 (211)	23 06 (59)
LGR 4427	L277-77	44RU	27 (69)	83 13 (211)	23 06 (59)
LGR 4432	L278-77	44RU	32 (81)	83 13 (211)	23 06 (59)
LGR 4436	L279-77	44RU	36 (91)	83 13 (211)	23 06 (59)
LGR 4022	L275-70	40RU	22 (56)	76 13 (193)	23 06 (59)
LGR 4027	L277-70	40RU	27 (69)	76 13 (193)	23 06 (59)
LGR 4032	L278-70	40RU	32 (81)	76 13 (193)	23 06 (59)
LGR 4036	L279-70	40RU	36 (91)	76 13 (193)	23 06 (59)
LGR 3522	L275-61	35RU	22 (56)	67 38 (171)	23 06 (59)
LGR 3527	L277-61	35RU	27 (69)	67 38 (171)	23 06 (59)
LGR 3532	L278-61	35RU	32 (81)	67 38 (171)	23 06 (59)
LGR 2422	L275-42	24RU	22 (56)	48 13 (122)	23 06 (59)
LGR 2427	L277-42	24RU	27 (69)	48 13 (122)	23 06 (59)



LHR-series — Lowell Host Racks

The new LHR is a two-part rack system that consists of an exterior enclosure and an interior, rollout/rotating rack. It combines the advantages of a small footprint with superior accessibility to mounted equipment, cables and wiring. Interior rack disengages from exterior for shop wiring.

- Enclosure has 10RU top with closure panels and internal brackets for mounting power
- Optional locking rear access cover and front door in solid or Plexiglas

Model No.	Panel Space rack units	Exterior Rack Depth inches (cm)	Interior Rack Depth* inches (cm)	Exterior Rack Height (overall) inches (cm)	Exterior Rack Width (overall) inches (cm)
LHR 4432	44RU	32 88 (84)	24 (61)	89 02 (226)	24 (61)
LHR 4442	44RU	42 88 (109)	34 (86)	89 02 (226)	24 (61)
LHR 3532	35RU	32 88 (84)	24 (61)	73 27 (186)	24 (61)
LHR 3542	35RU	42 88 (109)	34 (86)	73 27 (186)	24 (61)
LHR 2432	24RU	32 88 (84)	24 (61)	53 86 (137)	24 (61)

* Add 2-inches for usable depth. One rack unit equals 1.75-inches. Product dimensions have been rounded; see specification sheets for more detailed information (www.lowellmfg.com).

LWR-series — Lowell Wall-mount Rack

Lowell wall-mount racks are often specified for applications with limited floor space. Each rack in the LWR-series includes a backbox, cabinet and mounting rails. Backboxes include a rear (10-inch x 10-inch) opening, removable knockout panels for conduit and wireless, lacing points and provisions to attach board-mounted accessories, plus two key-style side locks. Optional front doors are available (solid, vented or Plexiglas).

- Black wrinkle powder epoxy finish
- Options and accessories can be viewed online at www.lowellmfg.com

Model No.	formerly	Panel Space rack units	Depth (overall)* inches (cm)	Height (overall) inches (cm)	Width (overall) inches (cm)	Load lbs. (kg)
LWR 1019	L250 17LD	10RU	19 (48)	23 63 (60)	23 (58)	150 (68)
LWR 1023	L253 17LD	10RU	23 (58)	23 63 (60)	23 (58)	150 (68)
LWR 1219	L250 21LD	12RU	19 (48)	27 13 (69)	23 (58)	150 (68)
LWR 1223	L253 21LD	12RU	23 (58)	27 13 (69)	23 (58)	150 (68)
LWR 1619	L250 28LD	16RU	19 (48)	34 13 (87)	23 (58)	200 (91)
LWR 1623	L253 28LD	16RU	23 (58)	34 13 (87)	23 (58)	200 (91)
LWR 2119	L250 36LD	21RU	19 (48)	42 88 (109)	23 (58)	250 (113)
LWR 2123	L253 36LD	21RU	23 (58)	42 88 (109)	23 (58)	250 (113)
LWR 2419	L250 42LD	24RU	19 (48)	48 13 (122)	23 (58)	300 (136)
LWR 2423	L253 42LD	24RU	23 (58)	48 13 (122)	23 (58)	300 (136)

* Depth includes cabinet section plus backbox. One rack unit equals 1.75-inches. Product dimensions have been rounded; see specification sheets for more detailed information (www.lowellmfg.com).



LWBR-series — Lowell Wall-mount with Base-support Rack

For extra support, the LWBR-series includes a base with a wall-mount rack for swing-out access to cables, wires and rack-mounted equipment. The cabinet pivots up to 90° on stainless steel ball transfers to ensure smooth weight transition. Rated to support loads up to 500 lbs., the LWBR is ideal for space-limited applications where access is also a priority.

- Universal mounting rails with tapped 10-32 holes can be field-reversed to access square cage-nut openings for 12-24, 10-32 or 6mm screws.
- Top knockouts accommodate up to 2 pair of dual-diversity wireless antennae
- Spring-load mounting system allows front-to-back assembly without tools
- Backbox (4.69-inch) features 12.5-inch x 10-inch rear opening, looming points, provisions for board-mounted accessories and key-operated side lock
- Optional surface front door (solid, Plexiglas or fully vented)

Model No.	Panel Space rack units	Depth (overall)* inches (cm)	Height (overall) inches (cm)	Width (overall) inches (cm)	Load lbs. (kg)
LWBR 2428	24RU	28 40 (72)	57 77 (147)	23 (58)	500 (227)
LWBR 2432	24RU	32 40 (82)	57 77 (147)	23 (58)	500 (227)
LWBR 3528	35RU	28 40 (72)	77 03 (196)	23 (58)	500 (227)
LWBR 3532	35RU	32 40 (82)	77 03 (196)	23 (58)	500 (227)
LWBR 4022	40RU	22 40 (57)	85 78 (218)	23 (58)	500 (227)
LWBR 4028	40RU	28 40 (72)	85 78 (218)	23 (58)	500 (227)
LWBR 4032	40RU	32 40 (82)	85 78 (218)	23 (58)	500 (227)
LWBR 4428	44RU	28 40 (72)	92 78 (236)	23 (58)	500 (227)

* Depth includes cabinet section plus backbox. One rack unit equals 1.75-inches. Product dimensions have been rounded; see specification sheets for more detailed information (www.lowellmfg.com).

FS-series — Flat-ship Shelf

This innovative wall shelf is shipped ready-to-install (no assembly required). Formed construction without unsightly welds allows shelves to be mounted as shown at right, or inverted. Black powder epoxy finish.

- Pre-punched cable lacing and accessory mounting holes provide versatility in the field.

Model No.	Depth (overall) inches (cm)	Height (overall) inches (cm)	Width (overall) inches (cm)	Load lbs. (kg)
FS18 14	14 (36)	8 24 (21)	18 22 (46)	100 (45)
FS18 16	16 (41)	8 24 (21)	18 22 (46)	100 (45)
FS18 20	20 (51)	8 24 (21)	18 22 (46)	100 (45)

Product dimensions have been rounded; see specification sheets for more detailed information (www.lowellmfg.com).

Wall-mounted Racks



The LWR-series includes a backbox, cabinet and mounting rails. Optional front doors are also available.



The LWBR cabinet pivots 90° (left or right) from the backbox. Swing orientation is field-changeable.

Fully-welded steel assembly includes provisions for multiple looming locations and distributed power supply.

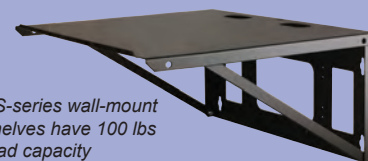
500 lbs load capacity

4RU base includes front mounting rails and rear access panel for cable or wire management.



Universal Mounting Rails

Universal mounting rails are included in many Lowell racks to accommodate multiple application needs. Racks are shipped with 10-32 threaded holes ready for use. To change to square punched holes for cage nut style hardware (12-24, 10-32, or 6mm) unbolt the Universal mounting rails, flip them over, and re-mount with square holes exposed. A scale is printed on both sides of the rails to facilitate set-up.



FS-series wall-mount shelves have 100 lbs load capacity.

Rack-mounted Power



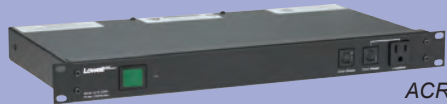
ACSPR-SCS4-2009-RT2



ACR-SCS4-1509K



ACSPR-2009-VTE



ACR-2009

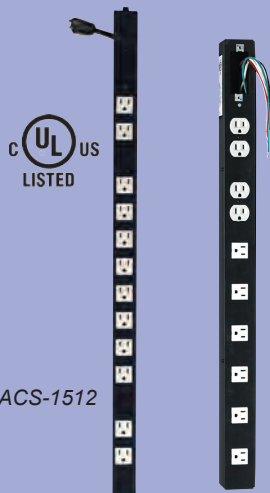


ACSPR-RPC1-1509K



L184-TVSS

ACS-1505SW



ACS-1512

UL180-2C-PT L188-IG ACS1524-2C

Lowell products are engineered and manufactured to meet or exceed industry standards for reliable power for sensitive electronics. Power products include a variety of options including remote control, sequencers, and advanced surge suppression. Professional-grade surge suppressors defeat power surges up to 72,000 amps and suppress the line to neutral without ground contamination. Custom-built modular power is also available in the new POWERSTAC™ strips. Visit our website at www.lowellmfg.com for the complete line of products for power distribution, control and protection.

AC Power Panels: 19-inch wide (cord and 15A or 20A plug)

Model No.	Description	Outlets	
		Switched	Unswitched
ACSPR SCS4 2009 RT2	20A + 4 step sequencer + surge* + trigger + remote	6	3
ACSPR SCS4 1509K	15A + 4 step sequencer + surge* + remote keyswitch	6	3
ACR SCS4 2009 RT2	20A + 4 step sequencer + rigger + remote	6	3
ACR SCS4 1509K	15A + 4 step sequencer keyswitch + remote	6	3
ACSPR 2009 VTE	20A + surge* + over/under protection 1RU	5	4
ACSPR 1509 VTE	15A + surge* + over/under protection 1RU	5	4
ACSPR 2009	20A + surge* suppression 1RU	5	4
ACSPR 1509	15A + surge* suppression 1RU	5	4
ACR 2009	20A power panel 1RU	5	4
ACR 1509	15A power panel 1RU	5	4
ACSPR RPC1 2009	20A + surge* + remote power control 1RU	6	3
ACSPR RPC1 1509K	15A + surge* + remote power control keyswitch 1RU	6	3

* Models with surge suppression exceed UL adjunct testing (1000 strikes @600 volts) and include a ten year warranty.



AC Power Panels — 19-inch wide (wire leads)

Model No.	Description	Switched Outlets
L184	15A with blank front rear outlets 2RU	4 duplex
L184 TVSS	15A with blank front rear outlets + TVSS 2RU	4 duplex

AC Power Strips — cord set

Model No.	Rating	Outlets	Size (L x W x H) inches (cm)
ACS 1505SW	15A + on/off switch	5 single	12 x 2 x 2 (30 x 5 x 5)
ACS 1506	15A	6 single	20 x 1.5 x 1.7 (51 x 4 x 4)
ACS 1512	15A	12 single	32 x 1.5 x 1.7 (81 x 4 x 4)
ACS 1524	15A	24 single	60 x 1.5 x 1.7 (152 x 4 x 4)
ACS 2012	20A	12 single	32 x 1.5 x 1.7 (81 x 4 x 4)
ACS 2024	20A	24 single	70 x 1.5 x 1.7 (178 x 4 x 4)
U180 20A	20A	6 duplex	30 x 2 x 2 (76 x 5 x 5)

AC Power Strips — wire leads

Model No.	Description	Outlets	Size (L x W x H) inches (cm)
UL18020A TVSS PT	20A + surge	6 duplex	30 x 2 x 2 (76 x 5 x 5)
UL180 WW PT	15A	9 single	30 x 2 x 2 (76 x 5 x 5)
UL180 2C PT	Two 15A circuits	6 single 2 duplex	30 x 2 x 2 (76 x 5 x 5)
ACS 1524 2C	Two 15A circuits	24 single	70 x 1.5 x 1.7 (178 x 4 x 4)
ACS 2024 2C	Two 20A circuits	24 single	70 x 1.5 x 1.7 (178 x 4 x 4)
L188	Ten 20A circuits	10 duplex	56 x 4 x 2 (142 x 10 x 5)
L188 G	Ten 20A circuits	10 isolated duplex	56 x 4 x 2 (142 x 10 x 5)



POWERSTAC™ — modular power

With the new POWERSTAC modular power system, you can customize a circuit layout using modules from the power library, and order the power strip pre-installed in a ganging or enclosed rack, saving costly field installation time and labor. For more information, visit our website or contact your sales representative.

Note: a POWERSTAC may also be ordered without a rack—additional packaging charges will apply.

Product dimensions have been rounded; see specification sheets for more detailed information (www.lowellmfg.com).

Low Voltage Sequencers and Switches

Four- and eight-step sequencers power systems up and down in time-specified order and include an alarm interface. Eight-step models include an alternate sequence mode for secondary activation. Power supply is included. Units are available with or without keylock—see website for complete line of products.

Model No.	Description	Panel Space (rack units)
SCS8R ASM	8 step sequencer with alternate sequence mode	1RU
SCS4RK	4 step sequencer with key switch activation	1RU

Low Voltage Remote Trigger

Cost-effective remote power controls (RPC-series) combine with remote power switches (RPS-series) to control equipment from alternate locations. Low-voltage connections and simple plug-in operation of equipment makes system installation easy. Multi-circuit and hardwire remote power controls are also available.

Model No.	Description	Size (L x W x H) inches (cm)
RPC1	Remote power control 15A 1duplex	7.5 x 1.75 x 3.25 (19 x 4.5 x 8.5)
RPC1 TVSS CD	Remote power control 20A 1duplex + surge suppression	7.5 x 2.75 x 3.25 (19 x 7 x 8.5)
RPC 5 CD	Remote power control 20A 5 duplex	30 x 2 x 2 (76 x 5 x 5)
RPC 1 30A MC	Remote power control 30A Twistlock 6 ft whip	7.5 x 2.75 x 3.25 (19 x 7 x 8.5)
RPSW KP ASM	Switch key ASM mode 1 LED (1 gang white decora plate)	
RPSB2 MP	Switch push momentary 2 LED (1 gang black decora plate)	

Advanced Surge Suppression

Advanced Surge Suppression was developed to provide exceptional voltage protection for sensitive electronic equipment. These professional-grade units defeat power surges up to 72,000 amps and suppress the line to neutral (no ground contamination). Patented outlet plates on box-style units rotate 90° for front/side access. The COMPAC™ series is specially suited for applications in need of a low-profile unit. Available in box or stick styles, they feature easy plug-in installation and offer options like remote power control or over/under voltage protection. All surge suppressors are UL or ETL Listed and ANSI C62.41-compliant. 10-year warranty.

- Single and multi-circuit hardwired suppressors feature optional Ground Transient Filter (GTF—for Isolated Ground [I.G.] circuits only).
- Single circuit models ACSP-2004IG and ACSP-2004IG-GTF have four isolated ground receptacles (two on each rotating plate) plus two blank plates for plenum installations.
- Multi-circuit models ACSP20-6C and ACSP20-6C-GTF can be used as stand-alone units or in conjunction with an AC loadcenter to provide protection to specific circuits.

Model No.	Description	Size (L x W x H) inches (cm)	Style
ACSPS 1502	15A two receptacle (stick style)	12 x 2 x 2 (30.5 x 5 x 5)	plug in
ACSP 1502 RPC	15A two flip receptacle + remote control	9 x 6 x 1.75 (23 x 15 x 4.5)	plug in
ACSP 1502 VTE	15A two flip receptacle + over/under voltage	9 x 6 x 1.75 (23 x 15 x 4.5)	plug in
ACSP 2002 RPC	20A two flip receptacle + remote control	9 x 6 x 1.75 (23 x 15 x 4.5)	plug in
ACSP 2002 VTE	20A two flip receptacle + over/under voltage	9 x 6 x 1.75 (23 x 15 x 4.5)	plug in
ACSP 2004 G	20A four flip isolated receptacle	7 x 8 x 3 (18 x 20 x 7.75)	hardwire
ACSP 2004 G GTF	20A four flip isolated receptacle + ground filter	7 x 8 x 3 (18 x 20 x 7.75)	hardwire
ACSP20 6C	20A six circuits	14 x 14 x 4 (36 x 36 x 10)	hardwire
ACSP20 6C GTF	20A six circuits + ground filter	14 x 14 x 4 (36 x 36 x 10)	hardwire

Sequenced Loadcenters

One-switch remote control of circuit breakers for time-sequenced power to AV components. Can be set to include all or partial components using the Alternate Sequence Mode. Includes eight-step, 24-circuit sequencer, single or three-phase loadcenter, and three switches.

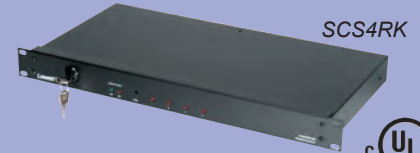
Model No.	Description
ACLCL 100 20 SC248 ASM	Sequencer + 100A 20 space breaker for 20 circuits
ACLCL 200 30 SC248 ASM	Sequencer + 200A 30 space breaker for 40 circuits
ACLCL 3P 125 30 SC248ASM	Sequencer + 125A 30 space breaker for 42 circuits
ACLCL 3P 225 42 SC248ASM	Sequencer + 225A 42 space breaker for 42 circuits

Product dimensions have been rounded; see specification sheets for more detailed information (www.lowellmfg.com).

Rack-mounted Power



SCS8R-ASM



SCS4RK



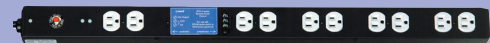
RPSW-KP-ASM



RPSB2-MP



RPC1



RPC-5-CD



ACSPS-1502

ACSP-2002-RPC



The COMPAC line of plug-in surge suppressors mount virtually anywhere; in a rack, under a counter or behind televisions



ACSP2004IG-GTF

Hardwired, single-circuit surge suppressors mount in a rack, on a wall or in the ceiling (as shown below)



Outlet plate rotates to alter plug direction



ACSP20C 6C GTF Multi-circuit surge suppressor mounts in a remote location or directly to a loadcenter to provide surge protection to groups of outlets



ACSC-100-20-SC248-ASM

Lowell manufactures a comprehensive line of rack accessories to meet a variety of application needs. To view the full product line or obtain specific model numbers, styles and sizes, visit our website at www.lowellmfg.com or contact your sales representative.

RMK-series — Rack Mount Kits

Shelf kits with custom face plates provide professional, secure installation for non-rackmount equipment. Each kit includes a vented/hinged shelf, rear bracket stops and a face plate that's custom-made to individual specifications. The hinged shelf ships flat and ready-to-install (no assembly required). Available in 14-inch or 18-inch depths (36 or 46cm), 2-5RU.



RMK-214

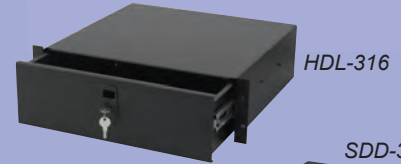
The RMK hinged shelf ships flat and ready-to-install. The custom face plate attaches after equipment is mounted.



Popular Rack Accessories

Model No.	formerly	Description
19-inch wide Shelves		
US-series	L15	Utility Shelf 10-inch (25cm) or 14-inch (36cm) depth 2RU-3RU
VDS-2-2032	L15-3X	Variable Depth Shelf 20 to 32-inch depth (51-81cm) 2RU
USVC-series	L10	Utility Shelf Vented Clamping 15-inch depth (38cm) 2RU-4RU
19-inch wide Drawers / Media Holders		
HDL-series	L18	Heavy Duty drawer with Latchlock 16 5-inch depth (42cm) 2RU-6RU
SDD-series	L28	Shallow Depth Drawer 14 5-inch depth (37cm) 2RU-4RU
MH-4-CD	L22-197	Media Holder for Compact Discs 5 7.5-inch depth (15cm) 4RU
19-inch wide Panels		
AP-series	L2	Aluminum Panel (16-gauge formed edge 1RU-6RU)
SP-series	L3	Steel Panel (16-gauge formed edge 1RU-12RU)
SVSP-series	L6	Steel Vented Slotted Panel (16-gauge formed edge 1RU-2RU)
SSC-series	L9	Steel Security Cover (Plexiglas or vented 1RU-2RU)
D3P- D-1	LD3-RMP	Decora 3-position Panel with pocket- D® 1RU
D3P- D-2	LD3-RMP-2	Decora 3-position Panel with pocket- D 2RU
D8P- D-3	LD8-RMP	Decora 8-position Panel with pocket- D 3RU
D9P- D-3	LD9-RMP	Decora 9-position Panel with pocket- D 3RU
Thermal Management		
FW3-3	LWF-195-3	Fan-panel Whisper-style 3-fans (50cfm each) 3RU
FW4-7	LWF-1912	Fan-panel Whisper-style 4-fans (50cfm each) 7RU
FW2-RD	LWF-RD2	Fan-panel Whisper-style 2-fans (50cfm each) for vented Rear Door
FW1-K T	LWF-K T	Fan Whisper-style 1-fan (4 7-inch housing 50cfm) K T
FTC-1	LTC-1	Fan Thermostat Control 1-duplex (50-90°F)
Wire Management and Hardware		
CMR	LCRS	Cable Management Rod Straight 0 25-inch (0 6cm) diameter
CMR4	LCRS-4	Cable Management Rod 4-inch (10 2cm) offset
CMBS	LCMP	Cable Management Bar Slotted 0 63-inch (2cm) height
CMVB	CLB	Cable Management Vertical Bar 2 63-inch (7cm) width
VCW-12	----	Velcro Cable Wrap (12 pack)
RPSF-500	RSP-500	Rack Pilotpoint™ Screws Finish-head (Phillips 10-32) jar of 500 pieces

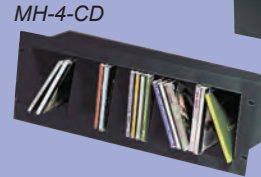
Rack Accessories



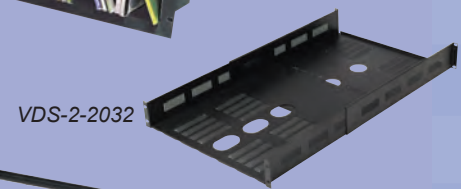
HDL-316



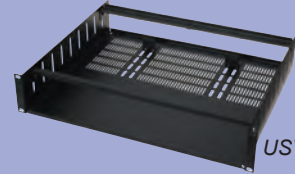
SDD-314



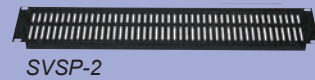
MH-4-CD



VDS-2-2032



USVC-215



SVSP-2



SSC-2P



D8P-ID-3



D3P-ID-1



FW3-3



FTC-1

RPSF-500



CMR



CMR4



CMBS



CMVB-32